

NEAUVIA



Dr. Diego Araya Bruna
Maxilofacial Rehabilitation,
Chile

Enduring excellence: safety and satisfaction over time

REPORT SUMMARY



PATIENT

A 25-year-old healthy male sought subtle masculine facial enhancement.

TREATMENTS

The Apolo Technique reinforced midface and lower face using minimal PEG-HA. **Neauvia Intense** (28 mg/ml) provided deep support and projection, while **Neauvia Stimulate** (26 mg/ml, 1% CaHA) was applied subcutaneously

to the lateral lower face and chin for contouring and collagen stimulation.

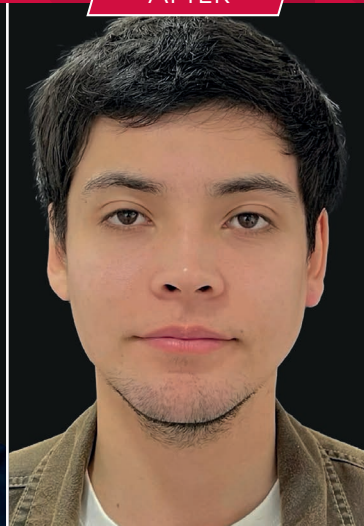
RESULTS

Over 3 years, the patient showed excellent volumetric retention, biointegration, and high satisfaction, confirming long-term safety and effectiveness of PEG-HA fillers in male facial aesthetics.

BEFORE



AFTER



/ **FILLERS**
STIMULATE
INTENSE

Neauvia products are for trained experts only. Use must follow approved indications and the Instructions for Use (IFU) in accordance to applicable laws and regulations in each country. Physicians are solely responsible for any treatments outside these conditions. The results shown are specific to an individual treatment plan. Treatment decisions must be adapted to each patient, who may respond differently based on numerous factors. Outcomes are variable and not guaranteed.

NEAUVIA *days*
ROME2025